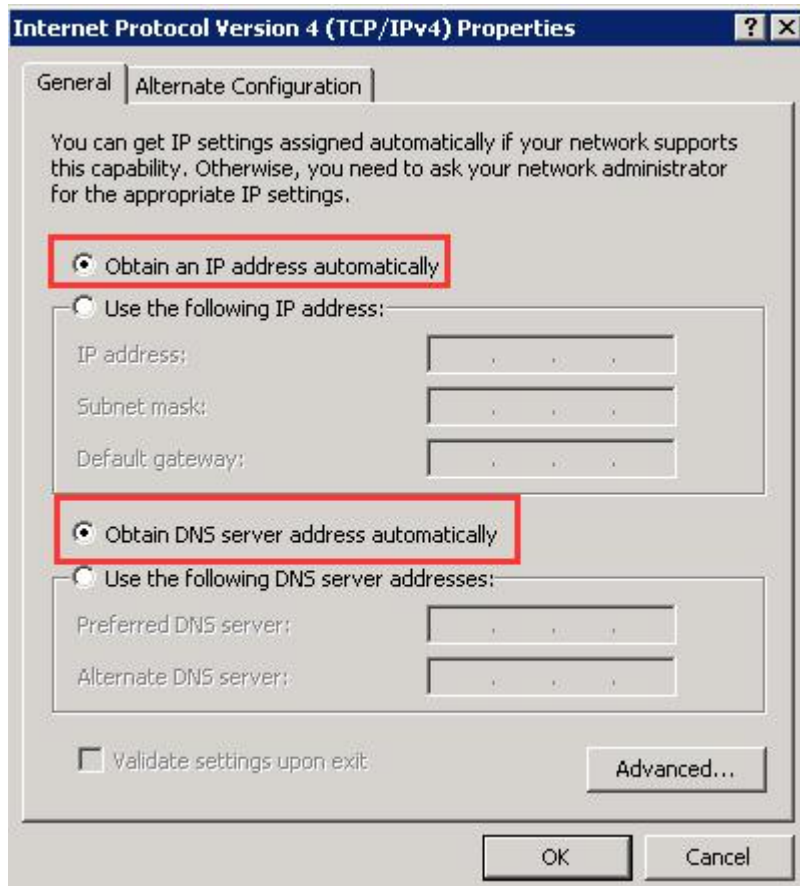
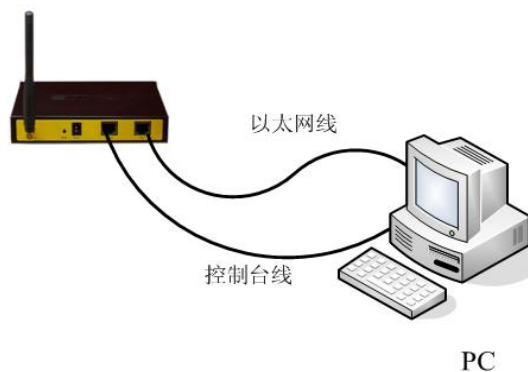


## Router firmware update user manual

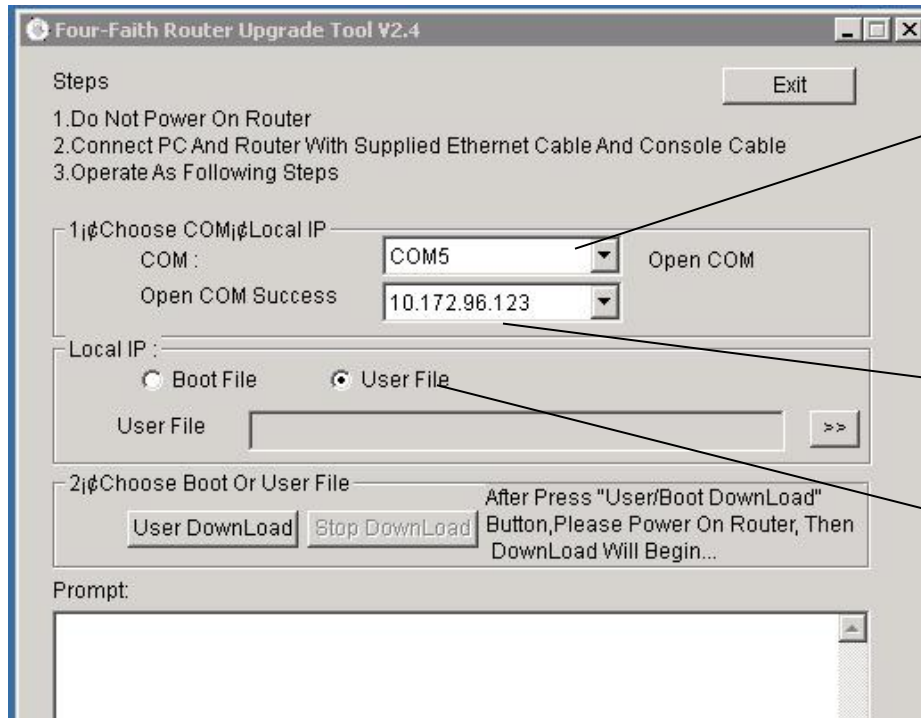
1. Set the pc to get automatic ip



2. Use the console cable to connect Console port of router to PC's serial port t(or use a usb-to-serial cable to connect console port to usb port of pc), Plug the cable's one end into the Local Network port of the router, and another end into your configure PC's Ethernet port



### 3、Run the update tool

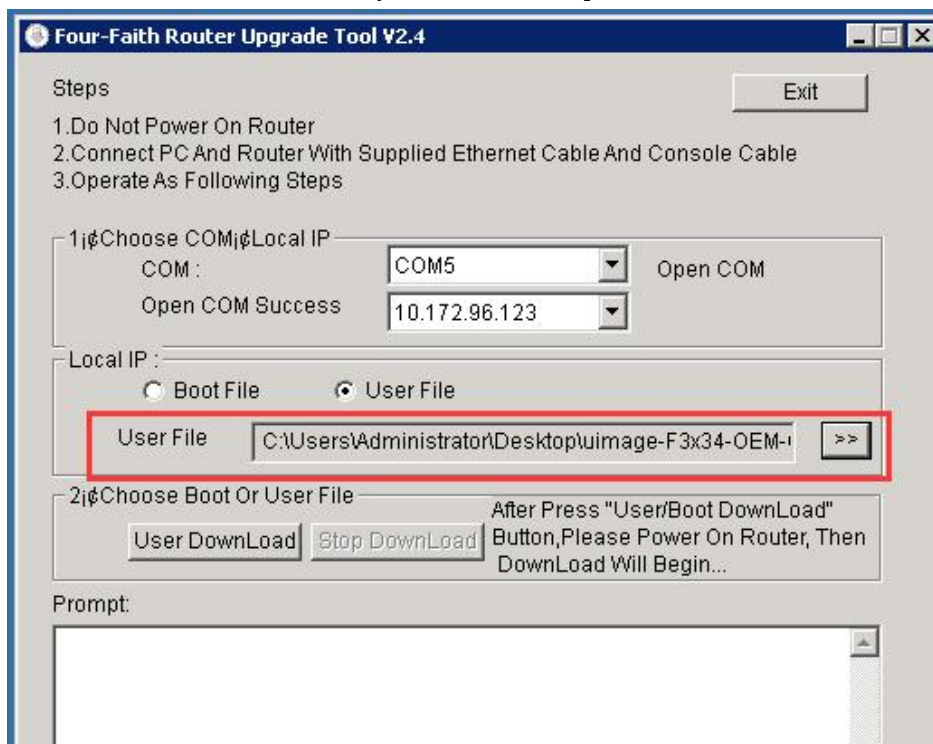


Choose the right com port  
you use in pc ,here i use  
com5

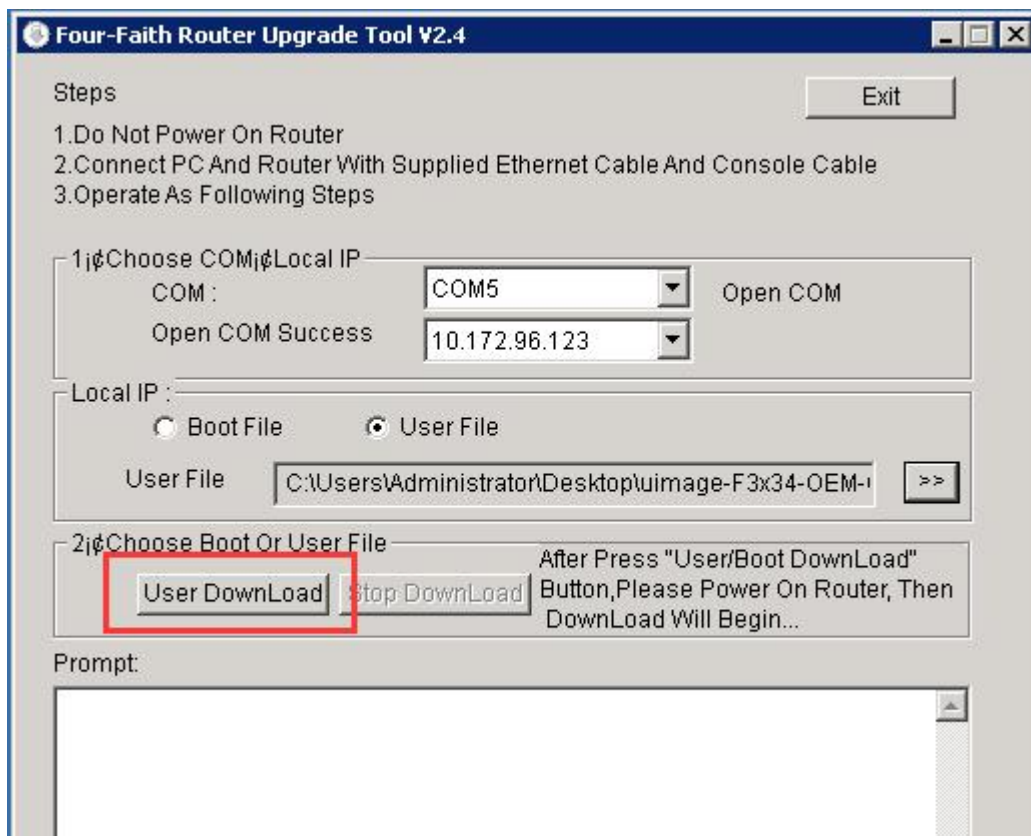
You can ignore this ip  
address

Choose user file

### 4. Choose the firmware you want to update



5、Press the User Download button, and **repower the router**



5、when you successfully update the firmware, you will receive the information as follows



6. Complete update.

Tips: During the update process, make sure to disconnect wifi from your pc